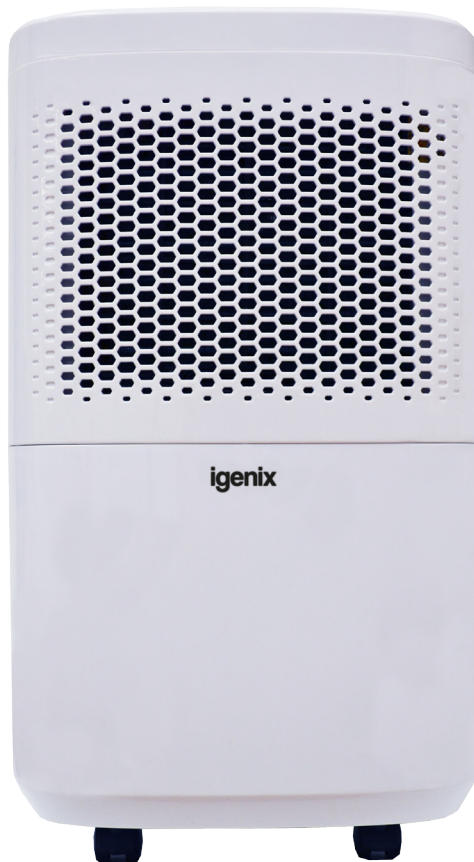


12 Litre Dehumidifier White



IG9813

Batch code:

Please read these instructions carefully before use and retain for future reference

**Before switching on your appliance,
always check for any damage which may have been caused in transit**

CONTENTS

Important Safety Instructions.....	2-4
Intended Use.....	4
Specification	5
Appliance Overview	5
Control Panel.....	6
Operating Instructions.....	6-8
Cleaning and Maintenance	9-10
Trouble Shooting Guide.....	10
Fuse Replacement.....	11
Disposal Information.....	11
Terms and Conditions and Warranty Information.....	12-13

IMPORTANT SAFETY INSTRUCTIONS

Read and follow all of the instructions even if you feel you are familiar with the product, and find a place to keep this manual handy for future reference.

Important: This appliance is intended for use in a domestic environment only. Any other use is not recommended by the manufacturer and may cause fire, electrical shocks or other injury to user or property. When using electrical appliances, basic safety precautions should always be followed:

- Do not operate the unit with a damaged cord or plug, after it malfunctions or has been dropped or damaged in any way. All electrical repairs must be carried out by a qualified electrician. Inadequate repairs may result in a major source of danger for the user and invalidate the warranty.
- This unit should always be kept in an upright position to avoid any damage. Locate the unit on a dry, flat stable surface.
- When storing or transporting the unit, always keep in an upright position, otherwise irreparable damage may be caused to the compressor; if in doubt we suggest waiting at least 24 hours before starting the unit
- Check the voltage of the appliance matches the household voltage, which is located on the rating label.
- Operate this unit in an ambient temperature between 5°C and 32°C.

- Ensure that the air inlets and outlets are not blocked or covered.
- Avoid touching any moving parts of the unit.
- Never insert fingers, pencils or any other objects through the guards.
- Do not place the unit too close to curtains or other objects - min 40cm.
- When using the “DRY CLOTHES MODE” to speed up the drying of wet clothes in the room, please keep the clothing at a safe distance from the unit to prevent water from dripping onto the unit.
- Never place anything on top of the unit and do not cover with any kind of material while in use.
- This product is intended for domestic use ONLY and not for commercial, industrial or outdoor use.
- Do not use the unit for any other purposes than its intended use.
- To protect against electrical shocks, do not immerse unit, plug or cord in water, or spray with liquids.
- Never unplug the power cord without switching the unit off first by pressing the “ON/OFF” button to “off”, as this could damage the unit.
- Avoid restarting the unit unless 5 minutes have passed since being turned off. This prevents damage to the compressor.
- Always unplug the unit when not in use, before cleaning or before moving location.
- To disconnect from the power supply, grip the plug and pull from the power socket. Never pull by the cord.
- Always empty the water tank before storing the unit away.
- This appliance can be used by children aged from 8 years and above if they have been given supervision or instruction concerning the use of the appliance in a safe way and understand the hazards involved.
- Cleaning and user maintenance shall not be made by children.
- Keep the appliance and its cord out of reach of children aged less than 8 years.

- Children shall not play with the appliance.
- This appliance can be used by persons with reduced physical, sensory or mental capabilities or lack of experience and knowledge if they have been given supervision or instruction concerning use of the appliance in a safe way and understand the hazards involved.
- Do not run power cord under carpeting, or cover with rugs or runners. Arrange the cord away from areas where it may be tripped over.
- Never operate or store the unit in direct sunlight.
- To repair the unit, take it to a qualified service engineer. Repairs carried out by unqualified people may cause damage to the unit or injury to persons or property and void the warranty.
- Where possible, avoid the use of an extension cable as they may overheat and cause a risk of fire. Only use an extension cord after ensuring it is in perfect condition.
- Do not use the unit without the air filter
- Do not place the unit next to heat sources (e.g. electrical fires, fireplaces, etc)
- This dehumidifier must not be used in spaces:
 - Where there is a high concentration of gases, solvent or other volatile organic compounds
 - In very dusty environments; in any domestic, commercial or industrial environment where air composition is flammable.

INTENDED USE - Purpose of a Dehumidifier

Air always contains a certain amount of water in the form of water vapour. This is known as humidity. The capacity of the air to hold water vapour increases with the temperature. This is why in our homes, as soon as the temperature decreases, the vapour contained in the air condenses leaving moisture on the colder surfaces in the room such as the windows and the walls etc.

The purpose of the dehumidifier is to remove the excess moisture from the air to control the condensation in the home. The optimum environmental conditions for the home are between 40% and 60% Relative Humidity (RH).

Below these levels the air can feel too dry and may cause skin complaints and create static. If temperatures in the home are below 10°C for prolonged periods, low level heating will be necessary to allow the condensation to evaporate into the air before dehumidification can take place. The air will however be slightly warmed by the dehumidifier as the dry air leaving the dehumidifier is between 1°C to 4°C higher than ambient room temperature.

SPECIFICATION

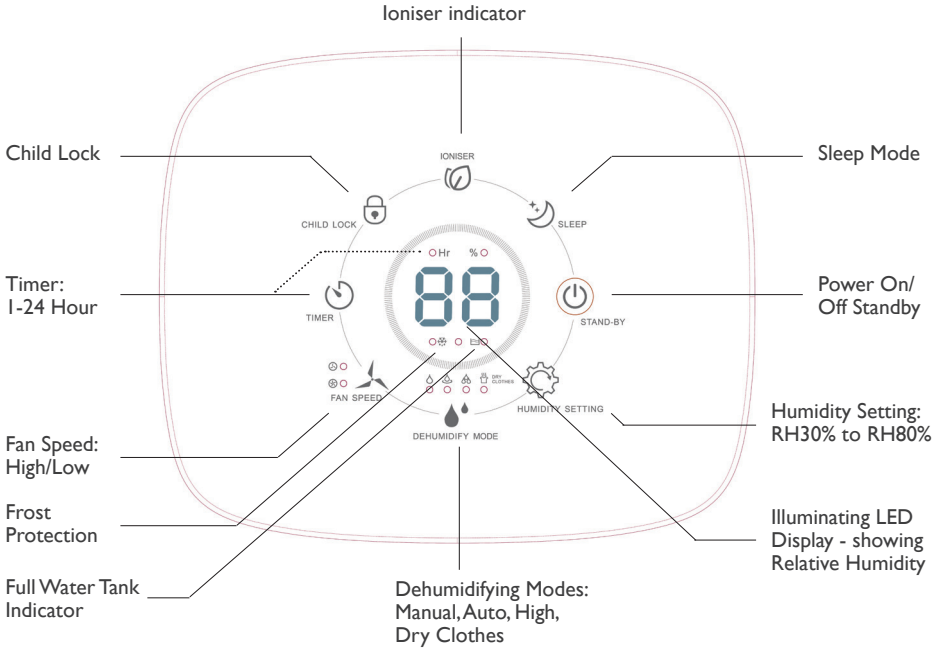
Dehumidifying Capacity	12 L/Day (30°C RH80%) 6 L/Day (27°C RH60%)
Voltage	220 - 240V
Frequency	50Hz
Rated Input Power	220W (27°C RH60%)
Rated Input Current	1.35A (27°C RH60%)
Water Tank Capacity	2.2 L
Operating Temperature	5°C - 32°C
Humidity Setting Range	30% - 80%
Filter Type	Active Carbon Filter
Air Volume	120m³/h
Refrigerant	R134a/70g
Noise Level	≤ 45dB(A)
Net Weight	12Kg
Product Dimensions (mm)	(H)460 x (W)280 x (D)240

Brand	Igenix
Product Code	IG9813
Product Description	Hermetically Sealed Equipment
Contains Fluorinated Greenhouse Gases	R-134A (HFC 134a)
F Gas Mass (kg)	0.070
Equivalent Tonne of Carbon Dioxide (ET CO2)	0.100
Global Warming Potential (GWP)	1430

APPLIANCE OVERVIEW



CONTROL PANEL



OPERATING INSTRUCTIONS

Appliance Location

Where to position your dehumidifier?

For best results; position the dehumidifier somewhere central like a landing or a hallway. As long as the internal doors are open, the excess moisture from all of the rooms in the house will migrate naturally towards the dehumidifier and be processed.

- Place the unit in an upright position on a dry, stable and flat surface.
- Ensure the unit is a safe distance away from walls or furniture (minimum of 30cm from Air Inlet, Air Outlet and Top of unit / minimum of 20cm from either side of unit).
- Please keep clothes at a safe distance of 40cm from air outlet of the unit to prevent water dripping into the unit.

Note: If you experience interference from other household appliances, such as a television or Radio, ensure you move the dehumidifier at least 70cm away.

- Plug the appliance into a suitable wall socket – the appliance will beep once and will remain in Standby Mode.
- Press the Power On/Off Button to switch on the appliance.

Note: Make sure that the water tank is in the correct position. If the 'Tank Full' indicator illuminates, remove the tank and replace it in the correct position.

- The white illuminating LED will automatically display the Relative Humidity of the room; you can now select the desired function:

Functions

Dehumidify Mode:



Manual: Within this mode you can manually select the desired humidity level (between RH30% to RH80%) and Fan Speed (High/Low).



Auto: This mode will automatically find the most efficient and economical way to run; according to the relative humidity and ambient temperature of the room.



High: This mode will operate in a high working status with the fan at a high speed to dehumidify a room very quickly. It is suggested to switch to Auto mode once the relative humidity goes down to save more energy.



Dry Clothes: This mode will operate in a medium working status with the fan at high speed, this mode is ideal to dry laundry.



Ioniser Mode:

Working in conjunction with the Active Carbon Filter; this mode releases negative ions into the air in order to make the air fresher and healthier.

Note: This mode will only operate the fan; dehumidifying functions cannot be selected when Ioniser Mode is on.



Humidity Setting:

The Humidity level can be set between RH30% to RH80% (increasing in increments of 5%)

Note: This mode can only be selected when in Manual dehumidifying mode.



Fan Speed:

Fan speed can switch between High and Low when the unit is operating in Manual dehumidifying mode or Ioniser mode.



Timer:

24 Hour Programmable Timer can be used to switch on the unit after a desired period of time; or can be used to switch off the unit after a desired period of time.

Note: Timer can be selected between 1 to 24 hours (in increments of 1 hour)

How to use Timer to switch on appliance:

- Plug the appliance into a suitable wall socket – the appliance will beep once and will remain in Standby Mode.
- Press the Power On/Off Button to switch on the appliance.
- The white illuminating LED will automatically display the Relative Humidity of the room; you can now select the desired function.
- Once function is selected, press the Power On/Off Button to switch appliance back to Standby Mode.
- Press the Timer Button to select the desired amount of time until you would like the appliance to switch on (the LED display will show the hours, continue to press the button until correct number of hours reached)
- The LED display panel will flash 4 times and then the control panel will switch to standby mode, with the timer indicator illuminated.
- The appliance will switch on after selected period.

How to use Timer to switch off appliance:

- Plug the appliance into a suitable wall socket – the appliance will beep once and will remain in Standby Mode.
- Press the Power On/Off Button to switch on the appliance.
- The white illuminating LED will automatically display the Relative Humidity of the room; you can now select the desired function.

- Once function is selected, press the Timer Button to select the desired amount of time you would like the appliance to switch off in (the LED display will show the hours, continue to press the button until correct number of hours reached)
- The LED display panel will flash 4 times and then the control panel will switch back to display the Relative humidity, the timer indicator will illuminate.
- The appliance will switch off after selected period and remain in standby mode.

Child Lock:

Press Child Lock button for 3 seconds to activate. To deactivate, press Child Lock button again for 3 seconds. Whilst Child lock is activated, functions cannot be selected as the buttons are locked.

Sleep Mode:

The Sleep Mode allows you to turn off the bright LED display panel. Press the Sleep button once to activate Sleep Mode, the button will illuminate and the unit will continue to operate, but the remainder of the LED display will turn off. If you would like to adjust the settings whilst in sleep mode, press the relevant buttons and the display will illuminate for 5 seconds and then return back to sleep mode. Press Sleep Mode button again to reset the LED control panel back to normal.

Frost Protection:

When operating the unit in temperatures less than 18°C the surface of the evaporator will accumulate frost and effect the efficiency of the dehumidifier. When this happens the machine will go into periodic defrost mode automatically and the indicator light will illuminate.

During defrost mode; the dehumidifying function and air purification function may run intermittently – this is normal. Do not switch off unit when running in defrost mode.

Note: Do not use the dehumidifier in temperatures less than 5°C. Should the dehumidifier freeze-up switch off the appliance, allow the temperature to rise and then restart.

Auto-Restart:

If the unit stops unexpectedly due to a power cut, it will restart when the power resumes with the previous function selected automatically.

Full Water Tank:

When the water tank is full, the dehumidifier will automatically stop operating and the full water tank indicator will illuminate. Remove the water tank carefully with both hands and discard the water. Replace the water tank in the correct position. The dehumidifier will automatically begin operating again.

Note: If the water tank is not installed correctly, the unit will not operate. Always ensure that water tank is installed correctly.

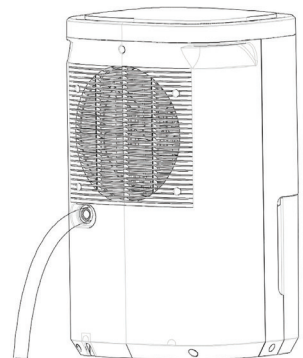
Continuous Drainage:

If you would like to use the dehumidifier over a long period of time whilst away from the home, you can use the continuous drainage feature.

- Remove the drainage plug located at the back of the unit, just below the air outlet.
- Connect the drainage hose (supplied) into the dehumidifier.
- Feed other end of the drainage hose into a suitable drainage point.

Note: When using the continuous drainage feature, the hose must be placed below the drainage outlet without knots or kinks.

Note: When the continuous drain feature is not being used, remove the drain hose from the outlet and replace the drainage plug.



CLEANING AND MAINTENANCE

Always switch off the unit and unplug from the mains socket before cleaning or performing any maintenance. When not in use for long periods it is also advisable to remove the plug from the power socket.

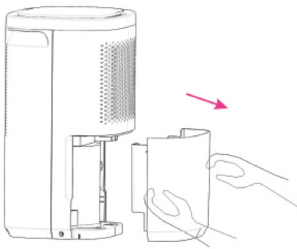
Wipe the outside of the unit with a soft damp cloth. You may use a mild detergent if necessary. Dry with a cloth. Do not use any harsh abrasives or solvents. Never immerse this appliance in water or any other liquid.

The air filter should also be cleaned regularly. To remove the filter remove the water tank and tip the appliance towards the rear at a 15°C angle. The filter is located behind the front grill.

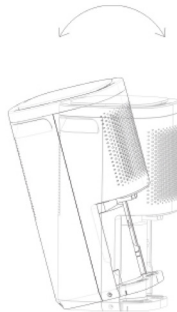
- Insert your hand behind the front grill and locate the black air filter
- Grasp the filter with your fingers and pull the filter towards you and downwards at the same time.
- The filter will unclip and drop slightly.
- Grip the bottom of the filter and pull down to completely remove from the appliance.
- Clean the filter and then replace it.

Note: Do not switch on the appliance for a minimum of 4 hours after the filter has been cleaned.

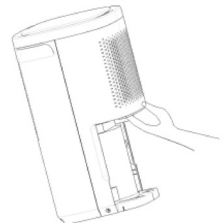
How to remove filter:



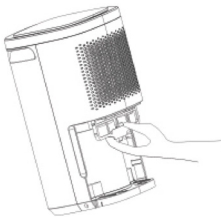
Remove water tank.



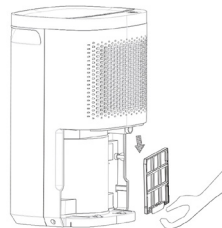
Tilt unit at a 15° angle to access filter.



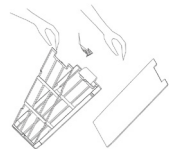
Insert hand behind front grill.



Grip filter with fingers and pull downwards.
Filter will drop and unclip.



Pull bottom of filter again with index finger and thumb to completely remove from unit



The water tank should be cleaned every few weeks to prevent growth of mould, mildew and bacteria. Partially fill the tank with clean water and add a little mild detergent. Switch it around and then empty the tank and rinse.

Note: After cleaning and drying the tank, it must be reinserted securely into dehumidifier in order to restart operation.

End of Season Maintenance

- Switch off unit and unplug from mains socket.
- Empty and clean the water tank.
- Clean the unit and the filters as per cleaning procedure above.
- Cover the unit and keep it in a dry place.

Important: Depending on usage and the area in which it is being used, the following procedures are advised to be done more frequently:

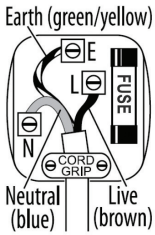
1. Ensuring the removable filter at the front is checked and cleaned, if required, or replaced, if damaged.
2. Check the front air intake grill is also clear of dust and blockages.
3. Making sure the float in the water collection tank moves freely and isn't jammed or damaged.
4. Inspecting the water collection tank for any dirt and clean if required.

TROUBLE SHOOTING GUIDE

If you experience difficulties with the appliance, please check the suggestions below before contacting customer services on 01473 271272:

Problem	Possible Cause	Possible Solution
Both fan and compressor are not working.	No power to the unit.	Check the mains power supply. Check the control panel is switched to "ON".
Not collecting water.	Room temperature and humidity may be too low.	The dehumidifier will not operate if the room humidity is already below the level set.
	Air intake filter may be blocked	Clean the filter of any obstructions
Unit is making loud noise.	Floor may be uneven	Re-position the unit on an even stable surface.
Leaking from the unit.	The water tank may not be installed correctly.	Remove the tank and re-fit correctly.
	Unit may have frozen.	Unplug the unit and allow the temperature to rise.

MAINS PLUG FUSE REPLACEMENT



Fuse Replacement (Class I)

This appliance must be earthed. Remove the central screw on the plug and open the shell. Take out the fuse and replace with a new fuse of the same Amp. Install the shell again and tighten the screws.

DISPOSAL INFORMATION

The European Directive 2012/19/EU on Waste Electrical and Electronic Equipment (WEEE), requires that old household electrical appliances must not be disposed of in normal unsorted municipal waste.

Old appliances must be collected separately in order to optimise the recovery and recycling of the materials they contain and reduce the impact on human health and the environment.

The crossed out “wheeled bin” symbol on the product reminds you of your obligation, that when you dispose of the appliance it must be separately collected. Consumers should contact their local authority or retailer for information concerning the correct disposal of their old appliance.





Igenix Warranty Terms & Conditions

This product is guaranteed for a period of 12 months as standard from the date of purchase against mechanical and electrical defects. You can extend your warranty for a further 12 months by registering your product.

Upon registration we will cover your product for a period of 24 months from the original purchase date against any mechanical or electrical defects.

To qualify for the guarantee, the product must be used for domestic household use only and in accordance with the instructions in the user manual. Any misuse of the product will result in the warranty being void.

The guarantee does not cover accidental damage, misuse, neglect, tampering or incorrect adjustment or installation.

The guarantee will be rendered invalid if the product is resold, has had its serial number removed (or has an invalid serial number), or if an unauthorised person has carried out any repairs or alterations.

The warranty does not cover accessories or consumable parts that require replacement under normal use. This includes shelving, dials, filters, belts and trays etc.

In the unlikely event of a breakdown please refer to the Troubleshooting guide in your user manual and check all plugs, fuses and the electricity supply.

If you still require assistance please contact our Customer Service department on **01473 271 272** or write to us at the following address:

**Customer Service Department
38 Bluestem Road, Ransomes Europark
Ipswich, IP3 9RR**

Please quote the Product Code which begins 'IG' or 'DF' and the Batch Code beginning '5' and give details of the exact fault. We will then decide whether to repair or replace the item.

Before we arrange the repair or replacement you will be required to return a copy of your proof of purchase. Please retain your original.

If an item is replaced within the agreed guarantee period, the guarantee for the replacement item will be calculated from the purchase date of the original.

In the event that the product is inspected and no fault is found or the product is not within the guarantee period you will be charged for the repair and any carriage costs.

igenix

Thank you for choosing Igenix

As a valued customer we would like to offer you a FREE 2 year warranty to cover your product against any electrical or mechanical defects.

This means that in the unlikely event you develop a fault or problem with your product we will happily repair or replace the item free of charge.

To qualify for the 2 year warranty you must register your product within 30 days of purchase. The full Terms & Conditions of our warranty policy are shown on the opposite page. They are also available on our website. **www.igenix.co.uk**

To register your product, please complete all sections of the form below and return to us at the following address: Igenix, 38 Bluestem Road, Ransomes Europark, Ipswich, IP3 9RR.

Alternatively you can visit the Igenix website and complete the form online.

Customer Details:

Title: _____ First Name _____ Surname: _____

Address: _____

Post Code: _____

Email: _____

Telephone: _____

Product Information:

Product Code (Beginning IG or DF): _____ Product Description: _____

Batch Number (Beginning 5): _____ Serial Number (if applicable): _____

Date of Purchase: _____

Retailer Name: _____

Retailer Location: _____

Please tick here to confirm you have read and accept our Terms & Conditions

Please tick here if you DO NOT wish to receive marketing information from us

Customer Signature: _____ Date: _____

igenix

38 Bluestem Road, Ransomes Europark, Ipswich, IP3 9RR

Tel. 01473 271 272

Disclaimer: Igenix operate a policy of continual improvement and development.
We therefore reserve the right to change/alter the specification and appearance of our appliances without prior notice.
All diagrams and images shown in this manual are for illustration purposes only.